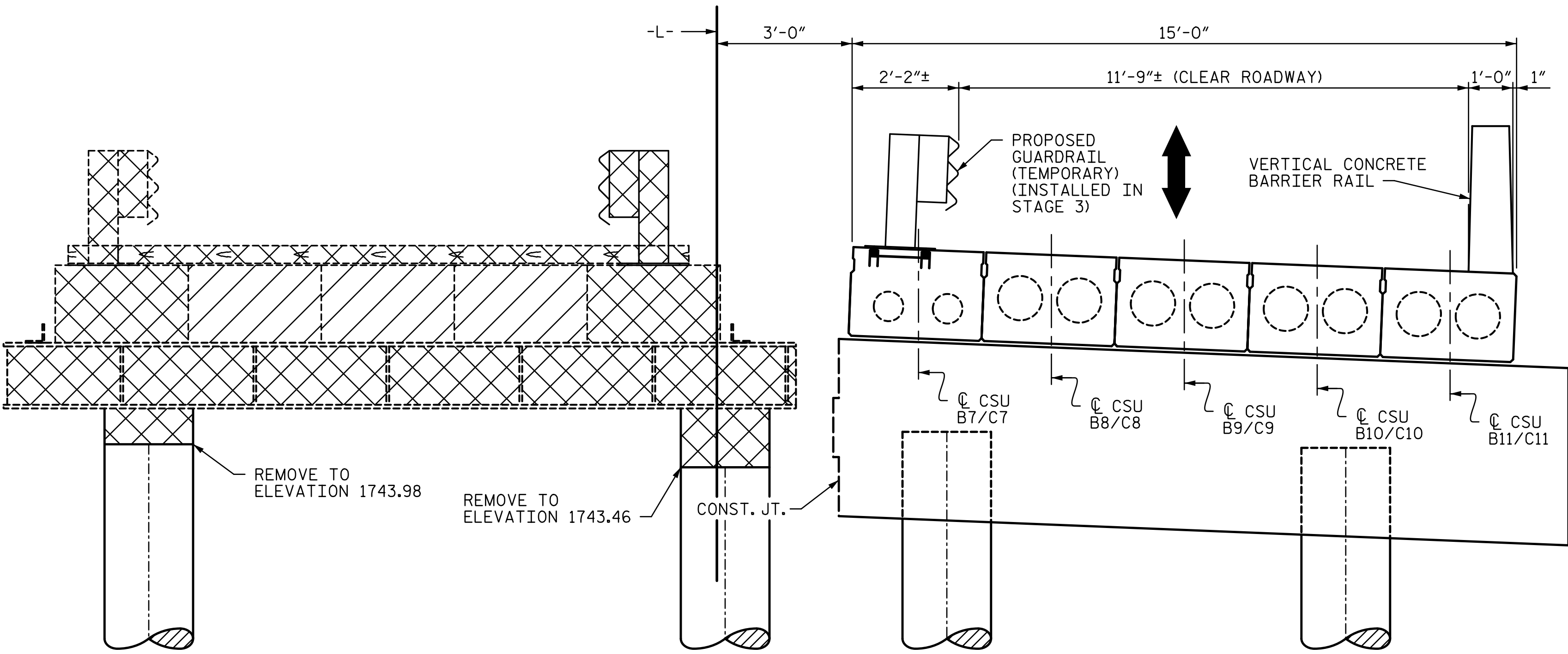


STAGE 3 (CONSTRUCTION)  
(LOOKING UPSTATION @ INTERIOR BENT 2)



STAGE 4 (REMOVAL)  
(LOOKING UPSTATION @ INTERIOR BENT 2)

STAGE 3 SEQUENCE:

1. RE-INSTALL TRANSVERSE POST TENSIONING ON CSU 1-5. TIMBER MATS MAY BE REMOVED ONLY AFTER POST TENSIONING HAS BEEN COMPLETED.
2. CONSTRUCT SUBSTRUCTURE FOR THE RIGHT SIDE OF END BENT 1, END BENT 2, BENT 1 AND THE BENT CAP OF BENT 2.
3. ERECT CORED SLABS C7-C11, POST-TENSION THE CORED SLAB UNITS AND INSTALL GROUT IN SHEAR KEYS.
4. CONSTRUCT VERTICAL CONCRETE BARRIER RAIL AND ATTACH TEMPORARY GUARDRAIL. FOR ADDITIONAL INFORMATION ON ATTACHING GUARDRAIL TO CSU, SEE "ANCHORAGE DETAILS FOR TEMPORARY GUARDRAIL" SHEET.

STAGE 4 SEQUENCE:

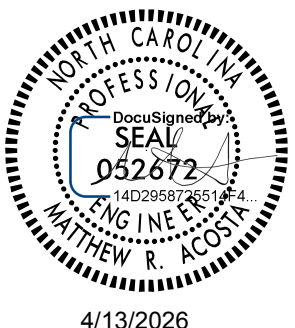
1. SHIFT TRAFFIC TO NEWLY CONSTRUCTED BRIDGE.
2. DETENSION AND REMOVE CORED SLAB UNITS AS SHOWN. SEE SHEET 2 OF 8 FOR EXISTING CORED SLAB UNITS TO BE RETAINED AND REUSED.
3. REMOVE EXISTING PILE CAP AS SHOWN.
4. REMOVE EXISTING 24" Ø PILES TO THE REQUIRED ELEVATION.

 REMOVE  
(SEE NOTES ON SHEET 2 OF 8)

 REMOVE TO BE REUSED  
(SEE NOTES ON SHEET 2 OF 8)

PROJECT NO. DF18314.2045332  
HENDERSON COUNTY  
STATION: 13+70.81 -L-

SHEET 7 OF 8

 4/13/2026 <b>RS&amp;H</b> RS&H Architects-Engineers-Planners, Inc. 8521 Six Forks Road, Suite 400 Raleigh, NC 27615 919-926-4100 FAX 919-846-9080 www.rsandh.com North Carolina License Nos. 50073-F-4983-C-20		STATE OF NORTH CAROLINA DEPARTMENT OF TRANSPORTATION RALEIGH					
		CONSTRUCTION STAGING (SPANS B & C AND BENT 2)					
REVISIONS						SHEET NO.	
NO.	BY:	DATE:	NO.	BY:	DATE:	S-12	
1			3			TOTAL SHEETS	
2			4			32	

DRAWN BY : M. KHIN DATE : 01/2025  
CHECKED BY : M. ACOSTA DATE : 01/2025  
DESIGN ENGINEER OF RECORD: M. ACOSTA DATE : 03/2026

DOCUMENT NOT CONSIDERED  
FINAL UNLESS ALL  
SIGNATURES COMPLETED